

3413 Wolfedale Road, Units 1-4

Mississauga, ON

FOR LEASE

Wolfedale & Burnhamthorpe



Total Area	8,000 sq. ft. <i>Each unit is 2,000 sq. ft.</i>
Clear Height	10 ft.
Zoning	E2-19
Lease Rate	\$12.00 per sq. ft. net
TMI	\$3.75 psf (2010)
Possession	Immediate

Remarks

- Five year old building
- Very well-maintained industrial complex
- Main floor office/commercial
- Great exposure and signage onto Wolfedale
- Open space, showroom or office
- **Unit 1:** 2 private offices and lunch room
- Carpets and drop ceiling
- 100% AC
- Lots of windows
- TMI includes water

*For more information,
please contact:*

BILL MASON

Sales Representative

bmason@indusite.com



ONCOR INTERNATIONAL

1015 Matheson Boulevard East, Suite 11 | Mississauga, ON L4W 3A4 | T: 905.624-3500 F: 905.624.2636 | www.indusite.com

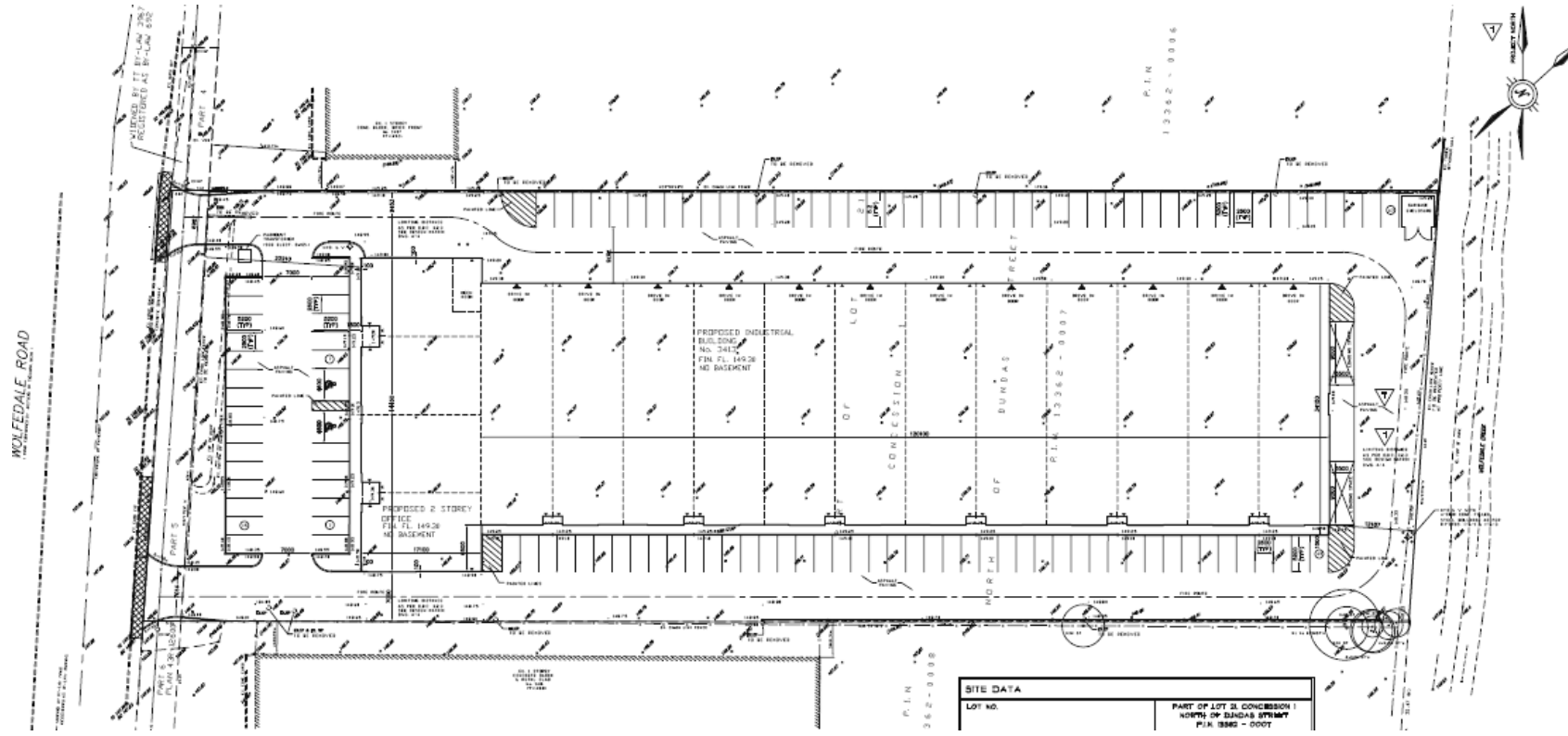
3413 Wolfedale Road, Units 1-4

Mississauga, ON

FOR LEASE

Wolfedale & Burnhamthorpe

Site Plan



For more information,
please contact:

BILL MASON

Sales Representative

bmason@indusite.com



ONCOR INTERNATIONAL

1015 Matheson Boulevard East, Suite 11 | Mississauga, ON L4W 3A4 | T: 905.624-3500 F: 905.624.2636 | www.indusite.com