

# 3041-3081 Universal Drive

Mississauga, ON

## FOR LEASE

Dundas & Wharton Way



	Size (sq. ft.)	Office (sq. ft.)	Clear Height (ft.)	Shipping	Lease Rate (psf net)	TMI (psf- 2009/2010)	Remarks
<b>3041 Universal</b>							
	12,720	2,500	14	3 T/L	\$5.15	\$2.65	<ul style="list-style-type: none"> <li>- Good shipping access</li> <li>- Great access to Highway 427</li> <li>- Rent to escalate over term</li> </ul>
<b>3041 Universal</b>							
	8,448	2,000	14	2 T/L	\$5.15	\$2.65	

For further information, please contact:



**Jeff Starkey**  
Partner, Broker of Record  
[jstarkey@indusite.com](mailto:jstarkey@indusite.com)

**Ken Donnelly**  
Partner, Broker  
[kdonnelly@indusite.com](mailto:kdonnelly@indusite.com)

**Larry D'Orsay\*\***  
Executive Vice President  
[ldorsay@indusite.com](mailto:ldorsay@indusite.com)

**Matt D'Orsay\***  
Senior Vice President  
[mdorsay@indusite.com](mailto:mdorsay@indusite.com)

ONCOR INTERNATIONAL

1015 Matheson Boulevard East, Suite 11 | Mississauga, ON L4W 3A4 | T: 905.624-3500 F: 905.624.2636 | [www.indusite.com](http://www.indusite.com)

ALL INFORMATION FURNISHED REGARDING PROPERTY FOR SALE OR LEASE IS FROM SOURCES DEEMED RELIABLE BUT NO WARRANTY OR REPRESENTATION IS MADE AS TO THE ACCURACY THEREOF AND THE SAME SUBMITTED SUBJECT TO ERRORS, OMISSIONS, CHANGE OF PRICE, RENTAL, OR OTHER CONDITIONS, PRIOR SALE OR LEASE, OR WITHDRAWAL WITHOUT NOTICE

# 3041-3081 Universal Drive

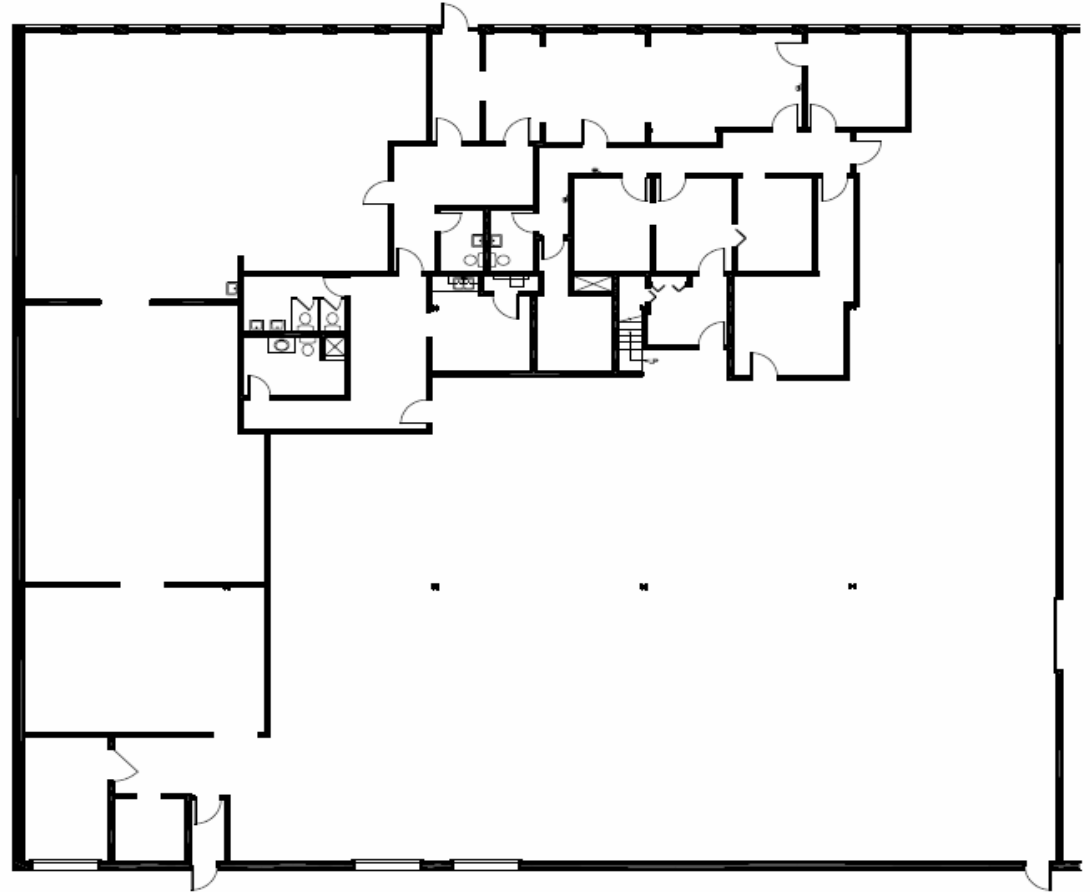
Mississauga, ON

FOR LEASE

Dundas & Wharton Way

## Floor Plan

3041 Universal



 **AS-BUILT PLAN**  
NOT TO SCALE



For further information, please contact:



**Jeff Starkey**  
Partner, Broker of Record  
[jstarkey@indusite.com](mailto:jstarkey@indusite.com)

**Ken Donnelly**  
Partner, Broker  
[kdonnelly@indusite.com](mailto:kdonnelly@indusite.com)

**Larry D'Orsay\*\***  
Executive Vice President  
[ldorsay@indusite.com](mailto:ldorsay@indusite.com)

**Matt D'Orsay\***  
Senior Vice President  
[mdorsay@indusite.com](mailto:mdorsay@indusite.com)

ONCOR INTERNATIONAL

1015 Matheson Boulevard East, Suite 11 | Mississauga, ON L4W 3A4 | T: 905.624-3500 F: 905.624.2636 | [www.indusite.com](http://www.indusite.com)

ALL INFORMATION FURNISHED REGARDING PROPERTY FOR SALE OR LEASE IS FROM SOURCES DEEMED RELIABLE BUT NO WARRANTY OR REPRESENTATION IS MADE AS TO THE ACCURACY THEREOF AND THE SAME SUBMITTED SUBJECT TO ERRORS, OMISSIONS, CHANGE OF PRICE, RENTAL, OR OTHER CONDITIONS, PRIOR SALE OR LEASE, OR WITHDRAWAL WITHOUT NOTICE

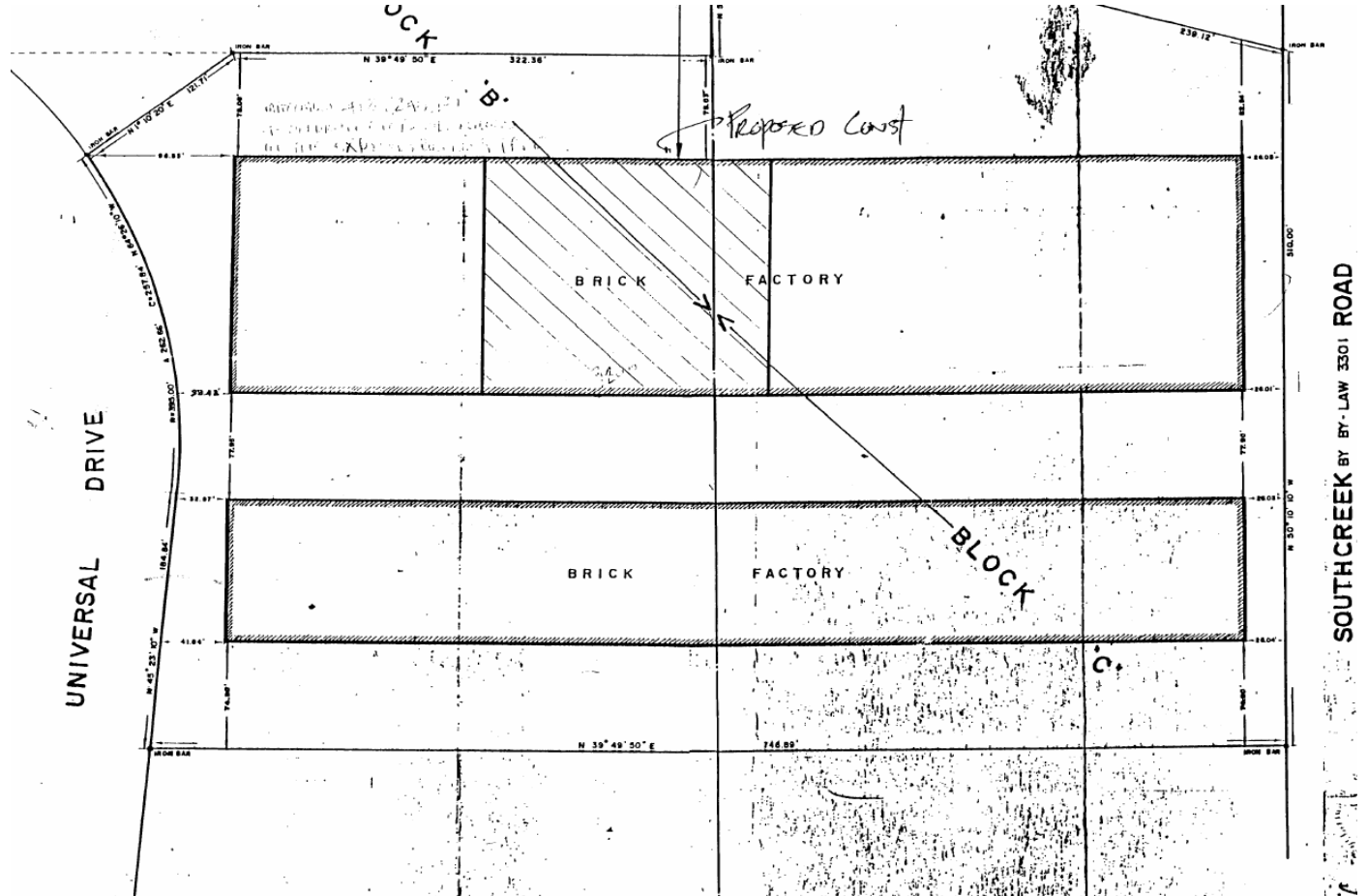
# 3041-3081 Universal Drive

Mississauga, ON

## FOR LEASE

### Dundas & Wharton Way

Survey



For further information, please contact:



**Jeff Starkey**  
Partner, Broker of Record  
[jstarkey@indusite.com](mailto:jstarkey@indusite.com)

**Ken Donnelly**  
Partner, Broker  
[kdonnelly@indusite.com](mailto:kdonnelly@indusite.com)

**Larry D'Orsay\*\***  
Executive Vice President  
[ldorsay@indusite.com](mailto:ldorsay@indusite.com)

**Matt D'Orsay\***  
Senior Vice President  
[mdorsay@indusite.com](mailto:mdorsay@indusite.com)

ONCOR INTERNATIONAL

1015 Matheson Boulevard East, Suite 11 | Mississauga, ON L4W 3A4 | T: 905.624-3500 F: 905.624.2636 | [www.indusite.com](http://www.indusite.com)

ALL INFORMATION FURNISHED REGARDING PROPERTY FOR SALE OR LEASE IS FROM SOURCES DEEMED RELIABLE BUT NO WARRANTY OR REPRESENTATION IS MADE AS TO THE ACCURACY THEREOF AND THE SAME SUBMITTED SUBJECT TO ERRORS, OMISSIONS, CHANGE OF PRICE, RENTAL, OR OTHER CONDITIONS, PRIOR SALE OR LEASE, OR WITHDRAWAL WITHOUT NOTICE