

# 6045 Netherhart Road

Mississauga, Ontario

For Lease

Dixie Road & Meyerside Drive



	<u>Unit 1</u>	<u>Unit 7</u>
<b>Total Area</b>	1,450 sq. ft.	2,500 sq. ft.
<b>Office Area</b>	1,450 sq. ft.	400 sq. ft.
<b>Clear Height</b>	8 ft.	16 ft.
<b>Zoning</b>	E-1	E-1
<b>Lease Rate</b>	\$6.00 per sq. ft. net	\$5.00 per sq. ft. net
<b>TMI</b>	\$4.50 psf (2009)	\$4.25 psf (2009)
<b>Possession</b>	Immediate	Immediate

\*Sales Representative; \*\*Broker

For more information, please contact:

**Hugh Knowles\***  
Senior Vice President  
[hknowles@indusite.com](mailto:hknowles@indusite.com)

**Gary Welch\***  
Senior Vice President  
[gwelch@indusite.com](mailto:gwelch@indusite.com)



ONCOR INTERNATIONAL 1015 Matheson Boulevard East, Suite 11 | Mississauga, ON L4W 3A4 | T: 905.624-3500 F: 905.624.2636 | [www.indusite.com](http://www.indusite.com)

ALL INFORMATION FURNISHED REGARDING PROPERTY FOR SALE OR LEASE IS FROM SOURCES DEEMED RELIABLE BUT NO WARRANTY OR REPRESENTATION IS MADE AS TO THE ACCURACY THEROF AND THE SAME SUBMITTED SUBJECT TO ERRORS, OMISSIONS, CHANGE OF PRICE, RENTAL, OR OTHER CONDITIONS, PRIOR SALE OR LEASE, OR WITHDRAWAL WITHOUT NOTICE

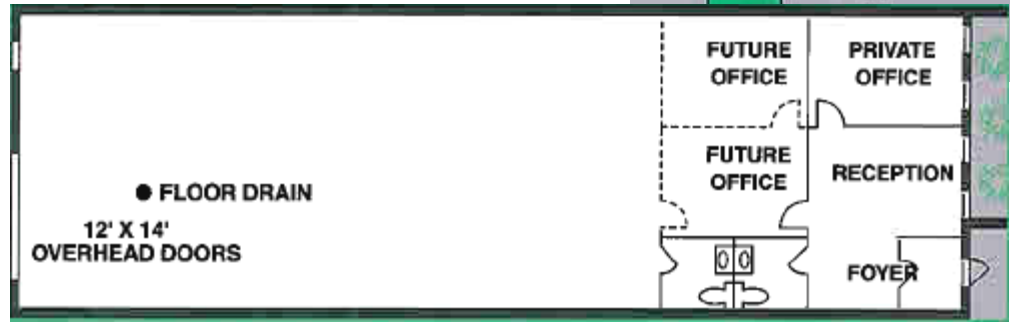
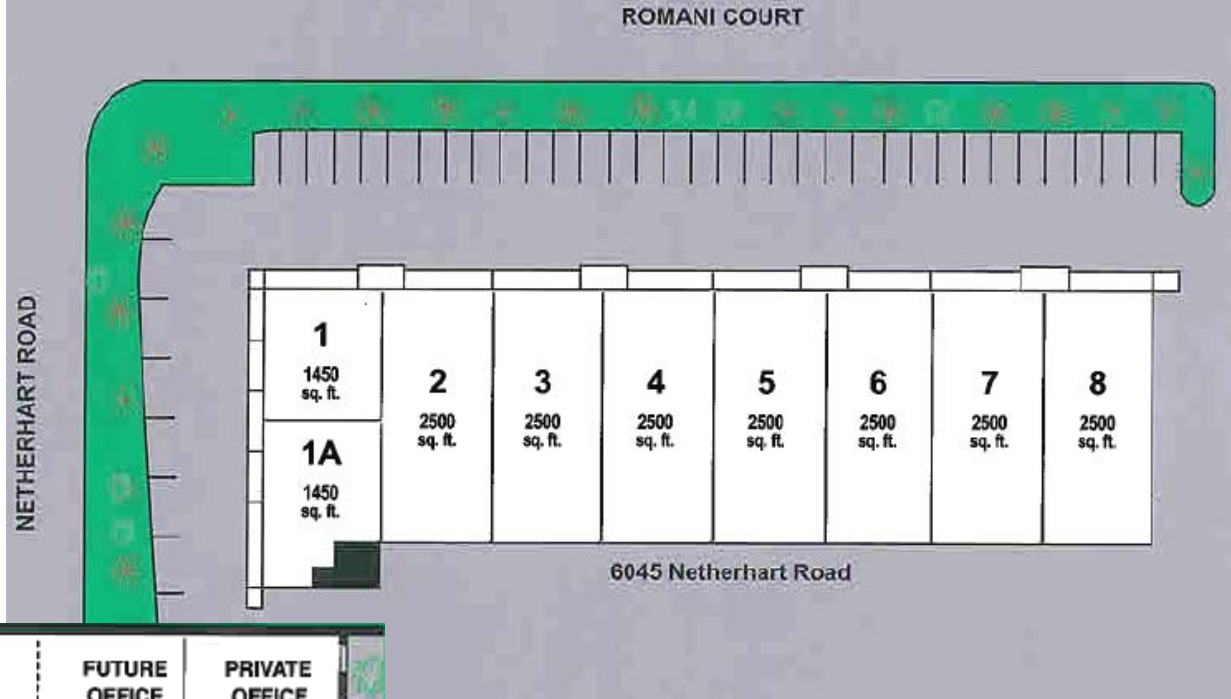
# 6045 Netherhart Road

Mississauga, Ontario

For Lease

Dixie Road & Meyerside Drive

## Site Plan & Typical Floor Plan



\*Sales Representative: \*\*Broker

For more information, please contact:

**Hugh Knowles\***  
 Senior Vice President  
[hknowles@indusite.com](mailto:hknowles@indusite.com)

**Gary Welch\***  
 Senior Vice President  
[gwelch@indusite.com](mailto:gwelch@indusite.com)



ONCOR INTERNATIONAL

1015 Matheson Boulevard East, Suite 11 | Mississauga, ON L4W 3A4 | T: 905.624-3500 F: 905.624.2636 | [www.indusite.com](http://www.indusite.com)

ALL INFORMATION FURNISHED REGARDING PROPERTY FOR SALE OR LEASE IS FROM SOURCES DEEMED RELIABLE BUT NO WARRANTY OR REPRESENTATION IS MADE AS TO THE ACCURACY THEREOF AND THE SAME SUBMITTED SUBJECT TO ERRORS, OMISSIONS, CHANGE OF PRICE, RENTAL, OR OTHER CONDITIONS, PRIOR SALE OR LEASE, OR WITHDRAWAL WITHOUT NOTICE