

3610-3688 Nashua Drive

Mississauga, Ontario

For Lease

Derry Road & Highway 427



	Total Area (Sq. Ft.)	Office Area (Sq. Ft.)	Shipping	Lease Rate (Per Sq. Ft. Net)	TMI (psf- 2010)
3610 Nashua					
Unit 7	3,155	1,600	1 T/L	\$5.50	\$3.59
Unit 8	5,085	500	1 T/L	\$5.50	\$3.42
Unit 12	3,875	1,575	1 T/L	\$6.25	\$3.42
3688 Nashua					
Units 11-12	12,163	2,000	2 T/L	\$4.25	\$3.42
3710 Nashua					
Units 3-4	14,858	2,813	2 T/L	\$4.25	\$3.42

- Close to highway 427 and Derry Road interchange
- Clean office area with lots of windows
- Parking in front of units
- Good shipping/receiving area
- Immediate possession
- Clear height is 18 feet
- First year rate; Rent to escalate over the lease term

For more information, please contact

*Sales Representative; **Broker

Lawrence D'Orsay**

Executive Vice President

ldorsay@indusite.com

Matt D'Orsay*

Senior Vice President

mdorsay@indusite.com

Gary Welch*

Senior Vice President

gwelch@indusite.com



ONCOR INTERNATIONAL

1015 Matheson Boulevard East, Suite 11 | Mississauga, ON L4W 3A4 | T: 905.624-3500 F: 905.624.2636 | www.indusite.com

ALL INFORMATION FURNISHED REGARDING PROPERTY FOR SALE OR LEASE IS FROM SOURCES DEEMED RELIABLE BUT NO WARRANTY OR REPRESENTATION IS MADE AS TO THE ACCURACY THEREOF AND THE SAME SUBMITTED SUBJECT TO ERRORS, OMISSIONS, CHANGE OF PRICE, RENTAL, OR OTHER CONDITIONS, PRIOR SALE OR LEASE, OR WITHDRAWAL WITHOUT NOTICE

3610-3688 Nashua Drive

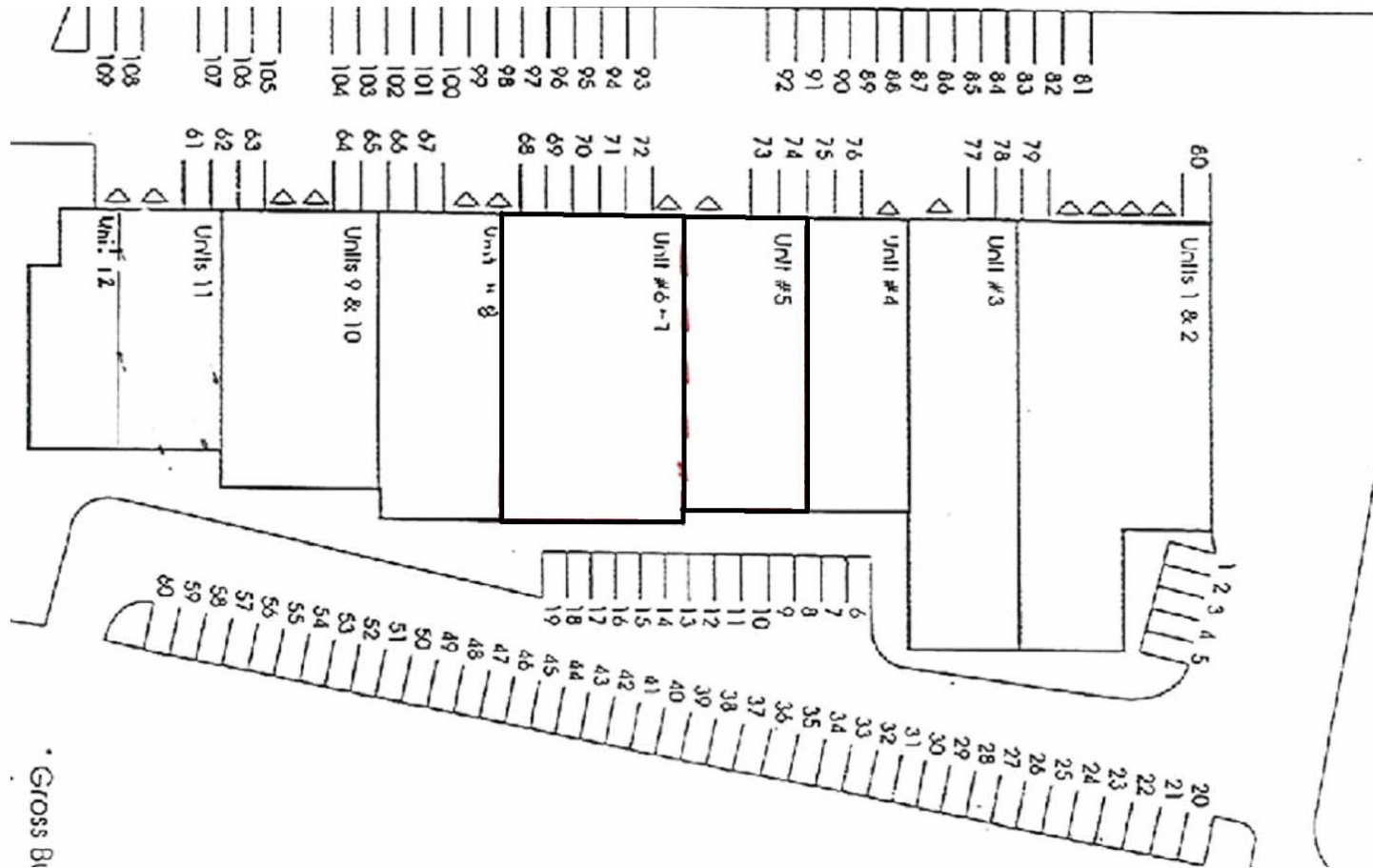
Mississauga, Ontario

For Lease

Derry Road & Highway 427

Site Plan

3610 Nashua



For more information, please contact

*Sales Representative; **Broker



Lawrence D'Orsay**
Executive Vice President
ldorsay@indusite.com

Matt D'Orsay*
Senior Vice President
mdorsay@indusite.com

Gary Welch*
Senior Vice President
gwelch@indusite.com

ONCOR INTERNATIONAL

1015 Matheson Boulevard East, Suite 11 | Mississauga, ON L4W 3A4 | T: 905.624-3500 F: 905.624.2636 | www.indusite.com

ALL INFORMATION FURNISHED REGARDING PROPERTY FOR SALE OR LEASE IS FROM SOURCES DEEMED RELIABLE BUT NO WARRANTY OR REPRESENTATION IS MADE AS TO THE ACCURACY THEREOF AND THE SAME SUBMITTED SUBJECT TO ERRORS, OMISSIONS, CHANGE OF PRICE, RENTAL, OR OTHER CONDITIONS, PRIOR SALE OR LEASE, OR WITHDRAWAL WITHOUT NOTICE

3610-3688 Nashua Drive

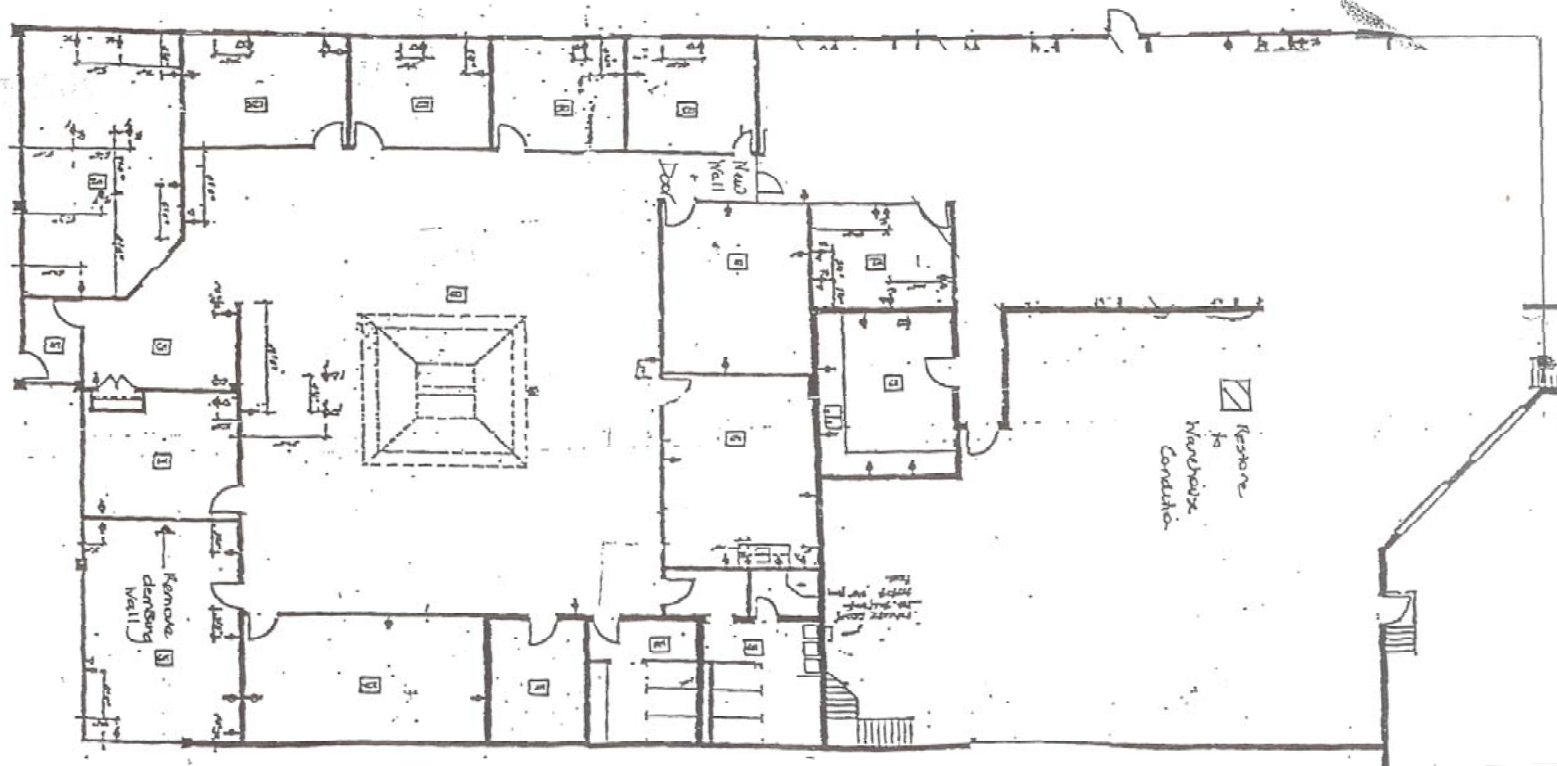
Mississauga, Ontario

For Lease

Derry Road & Highway 427

Floor Plan

3710 Nashua



For more information, please contact

*Sales Representative; **Broker



Lawrence D'Orsay**
Executive Vice President
ldorsay@indusite.com

Matt D'Orsay*
Senior Vice President
mdorsay@indusite.com

Gary Welch*
Senior Vice President
gwelch@indusite.com

ONCOR INTERNATIONAL

1015 Matheson Boulevard East, Suite 11 | Mississauga, ON L4W 3A4 | T: 905.624-3500 F: 905.624.2636 | www.indusite.com

ALL INFORMATION FURNISHED REGARDING PROPERTY FOR SALE OR LEASE IS FROM SOURCES DEEMED RELIABLE BUT NO WARRANTY OR REPRESENTATION IS MADE AS TO THE ACCURACY THEREOF AND THE SAME SUBMITTED SUBJECT TO ERRORS, OMISSIONS, CHANGE OF PRICE, RENTAL, OR OTHER CONDITIONS, PRIOR SALE OR LEASE, OR WITHDRAWAL WITHOUT NOTICE