

310 Judson Street

Etobicoke, ON

FOR LEASE

Judson Street & Horner Avenue



	<u>Size</u> (sq. ft.)	<u>Office</u> (sq. ft.)	<u>Clear Height</u> (ft.)	<u>Shipping</u>	<u>Lease Rate</u> (psf net)	<u>TMI</u> (psf- 2010)	<u>Possession</u>
Unit 2	3,847	2,500	16	1 T/L	\$7.50	\$4.50	Immediate
Units 2-3	7,667	5,750	16	2 T/L	\$7.50	\$4.50	Immediate
Units 2-4	11,417	9,135	16	3 T/L	\$7.50	\$4.50	Immediate
Units 2-5	16,579	12,435	16	3 T/L	\$7.50	\$4.50	Immediate
Units 15-17	12,929	1,500	16	4 T/L	\$5.50	\$4.50	30 Days
Unit 17	4,179	780	16	1 T/L	\$5.75	\$4.50	30 Days

For more information
please contact

Joe Nizich

Sales Representative

jnizich@indusite.com



ONCOR INTERNATIONAL

1015 Matheson Boulevard East, Suite 11 | Mississauga, ON L4W 3A4 | T: 905.624-3500 F: 905.624.2636 | www.indusite.com

ALL INFORMATION FURNISHED REGARDING PROPERTY FOR SALE OR LEASE IS FROM SOURCES DEEMED RELIABLE BUT NO WARRANTY OR REPRESENTATION IS MADE AS TO THE ACCURACY THEREOF AND THE SAME SUBMITTED SUBJECT TO ERRORS, OMISSIONS, CHANGE OF PRICE, RENTAL, OR OTHER CONDITIONS, PRIOR SALE OR LEASE, OR WITHDRAWAL WITHOUT NOTICE

310 Judson Street

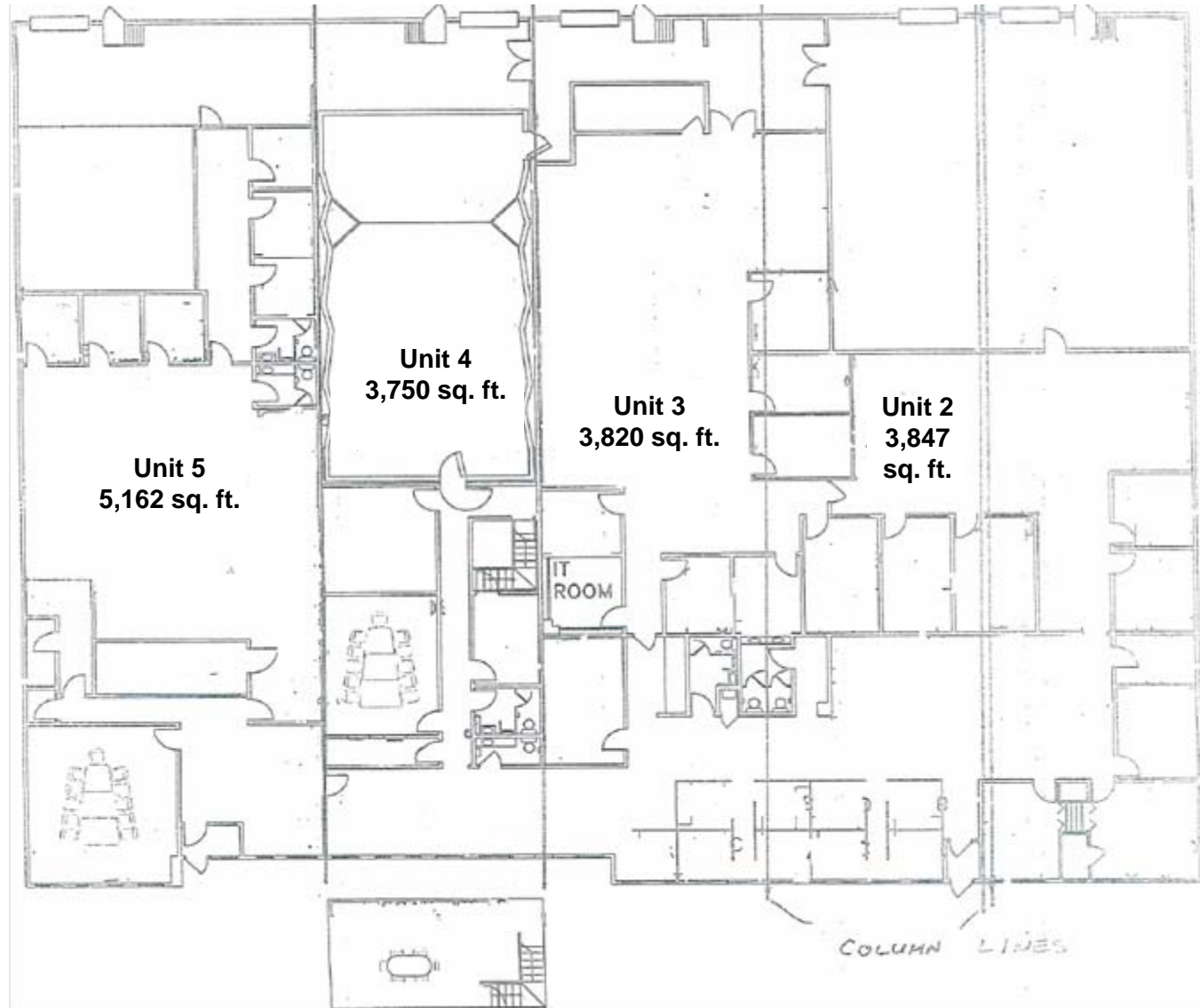
Etobicoke, ON

FOR LEASE

Judson Street & Horner Avenue

Floor Plan

Units 2-5



For more information
please contact

Joe Nizich

Sales Representative

jnizich@indusite.com



ONCOR INTERNATIONAL

1015 Matheson Boulevard East, Suite 11 | Mississauga, ON L4W 3A4 | T: 905.624-3500 F: 905.624.2636 | www.indusite.com

ALL INFORMATION FURNISHED REGARDING PROPERTY FOR SALE OR LEASE IS FROM SOURCES DEEMED RELIABLE BUT NO WARRANTY OR REPRESENTATION IS MADE AS TO THE ACCURACY THEREOF AND THE SAME SUBMITTED SUBJECT TO ERRORS, OMISSIONS, CHANGE OF PRICE, RENTAL, OR OTHER CONDITIONS, PRIOR SALE OR LEASE, OR WITHDRAWAL WITHOUT NOTICE