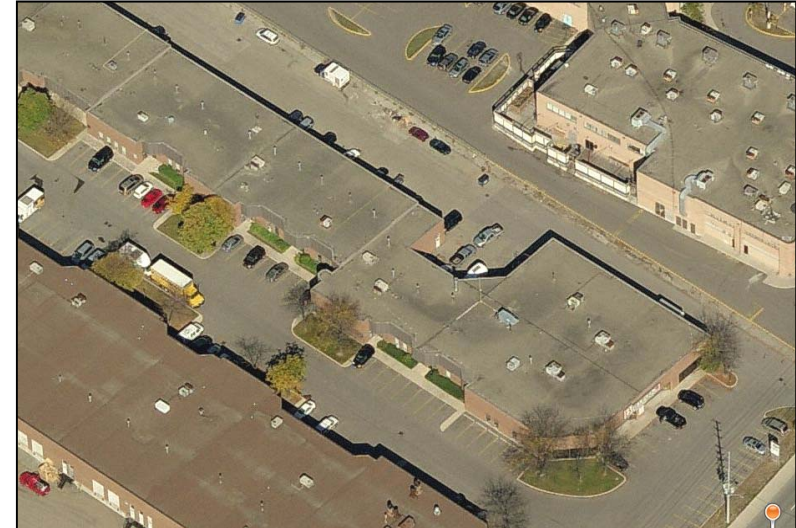


# 1295 Eglinton Avenue East, Unit 23

Mississauga, ON

## FOR LEASE

Derry & Bramalea Road



<b>Total Area</b>	1,227 sq. ft.	<b>Lease Rate</b>	\$6.95 per sq. ft. net
<b>Office Area</b>	300 sq. ft.	<b>TMI</b>	\$4.15 psf (2009)
<b>Clear Height</b>	16 ft.	<b>Possession</b>	Immediate
<b>Shipping</b>	1 Drive-in	<b>Remarks</b>	- Clean complex - South of Highway 401 and west of Dixie Road - No automotive uses allowed - Rate to escalate
<b>Zoning</b>	E-3		

*\*Sales Representative*



*For more information please contact*

**Dave Robertson\***  
Vice President  
[drobertson@indusite.com](mailto:d Robertson@indusite.com)

**John Gilbert\***  
Vice President  
[jgilbert@indusite.com](mailto:jgilbert@indusite.com)

**ONCOR INTERNATIONAL**

1015 Matheson Boulevard East, Suite 11 | Mississauga, ON L4W 3A4 | T: 905.624-3500 F: 905.624.2636 | [www.indusite.com](http://www.indusite.com)

ALL INFORMATION FURNISHED REGARDING PROPERTY FOR SALE OR LEASE IS FROM SOURCES DEEMED RELIABLE BUT NO WARRANTY OR REPRESENTATION IS MADE AS TO THE ACCURACY THEREOF AND THE SAME SUBMITTED SUBJECT TO ERRORS, OMISSIONS, CHANGE OF PRICE, RENTAL, OR OTHER CONDITIONS, PRIOR SALE OR LEASE, OR WITHDRAWAL WITHOUT NOTICE