

INDUSTRIAL/COMMERCIAL & OFFICE AVAILABILITIES!



- Great semi-commercial complex
- Ample parking
- Great street exposure
- Transit at your doorstep!
- Easy highway access
- Dixie/401 Business Park

*Click here for office
availabilities!*

*Click here for
industrial/commercial
availabilities!*

**Sales Representative: **Broker*



For more information,
please contact:

Gary Welch*
Senior Vice President
gwelch@indusite.com

Lawrence D'Orsay*
Executive Vice President
ldorsay@indusite.com

1015 Matheson Boulevard East, Suite 11 | Mississauga, ON L4W 3A4 | T: 905.624-3500 F: 905.624.2636 | www.indusite.com

INDUSTRIAL/COMMERCIAL AVAILABILITIES!

	Unit 2 <i>Sublease Until March 30, 2011</i>	Unit 10	Unit 11
Total Area	3,280 sq. ft.	4,450 sq. ft.	4,450 sq. ft.
Office Area	600 sq. ft.	1,500 sq. ft.	1,500 sq. ft.
Industrial Area	2,680 sq. ft.	2,950 sq. ft.	2,950 sq. ft.
Shipping	1 Truck Level	1 Truck Level	1 Truck Level
Lease Rate	\$9.50 psf net	\$5.95 psf net	\$5.95 psf net
TMI	\$5.78 psf	\$5.78 psf	\$5.78 psf

RETURN HOME

*Click here to view
building plan!*

*Sales Representative: **Broker



ONCOR INTERNATIONAL

For more information,
please contact:

Gary Welch*
Senior Vice President
gwelch@indusite.com

Lawrence D'Orsay*
Executive Vice President
ldorsay@indusite.com

1015 Matheson Boulevard East, Suite 11 | Mississauga, ON L4W 3A4 | T: 905.624-3500 F: 905.624.2636 | www.indusite.com

OFFICE AVAILABILITIES!

	Suite 201	Suite 204	Suite 300	Suite 303	Suite 304
Area Available	1,426 sq. ft.	1,687 sq. ft.	8,790 sq. ft.	5,606 sq. ft.	3,302 sq. ft.
Lease Rate	\$8.95 psf net PLUS escalations				
T & O	\$12.52 (2010)				
Possession	October 1, 2010				

Click here to view floor plan of Suites 201 & 204!

Click here to view floor plan of Suite 300!

Click here to view floor plan of Suite 303!

Click here to view floor plan of Suite 304!

RETURN HOME

*Sales Representative: **Broker



ONCOR INTERNATIONAL

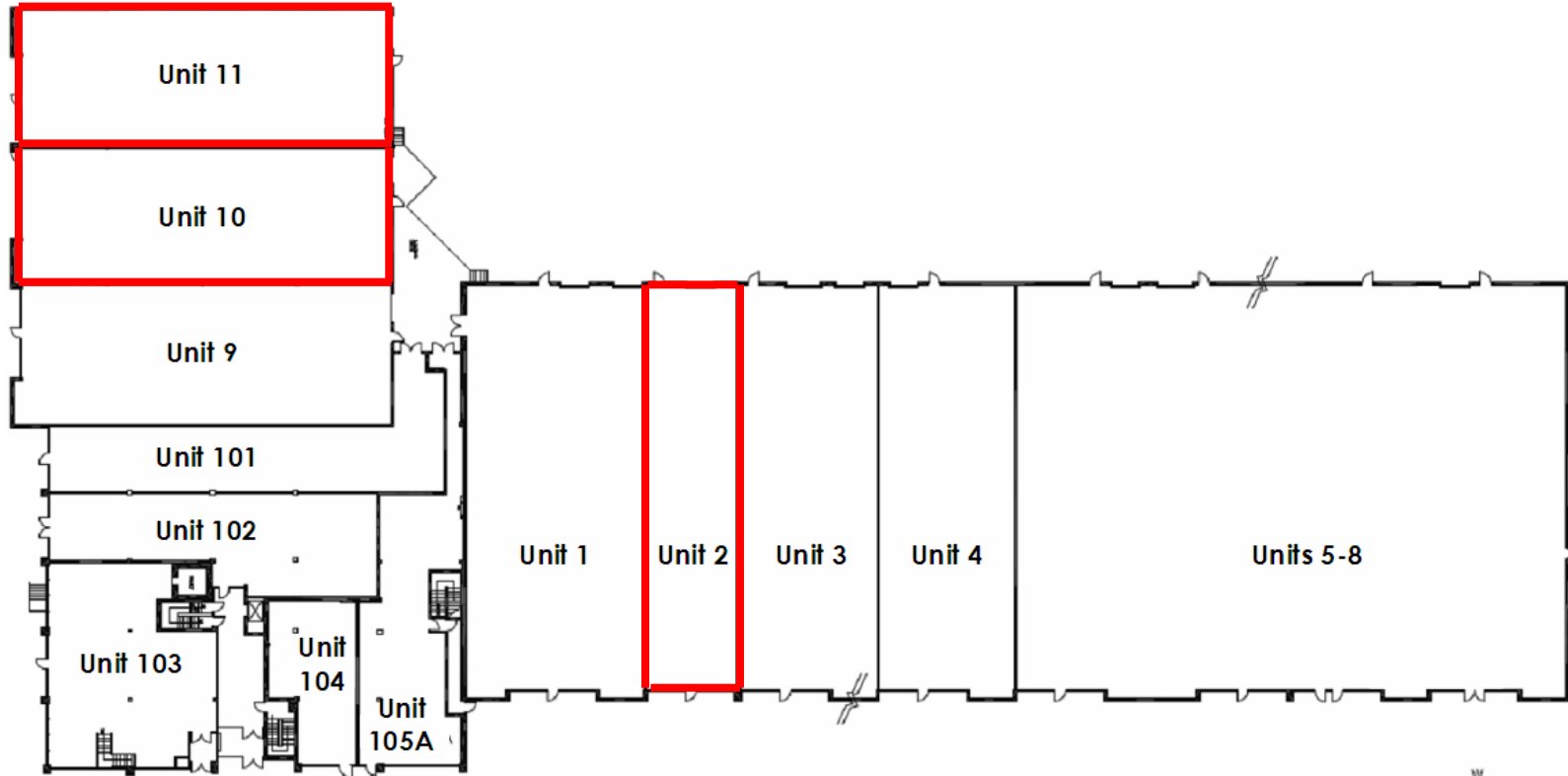
For more information,
please contact:

Gary Welch*
Senior Vice President
gwelch@indusite.com

Lawrence D'Orsay*
Executive Vice President
ldorsay@indusite.com

1015 Matheson Boulevard East, Suite 11 | Mississauga, ON L4W 3A4 | T: 905.624-3500 F: 905.624.2636 | www.indusite.com

Building Plan



RETURN HOME



*Sales Representative; **Broker

For more information, please contact:

Gary Welch*
Senior Vice President
gwelch@indusite.com

Lawrence D'Orsay*
Executive Vice President
ldorsay@indusite.com



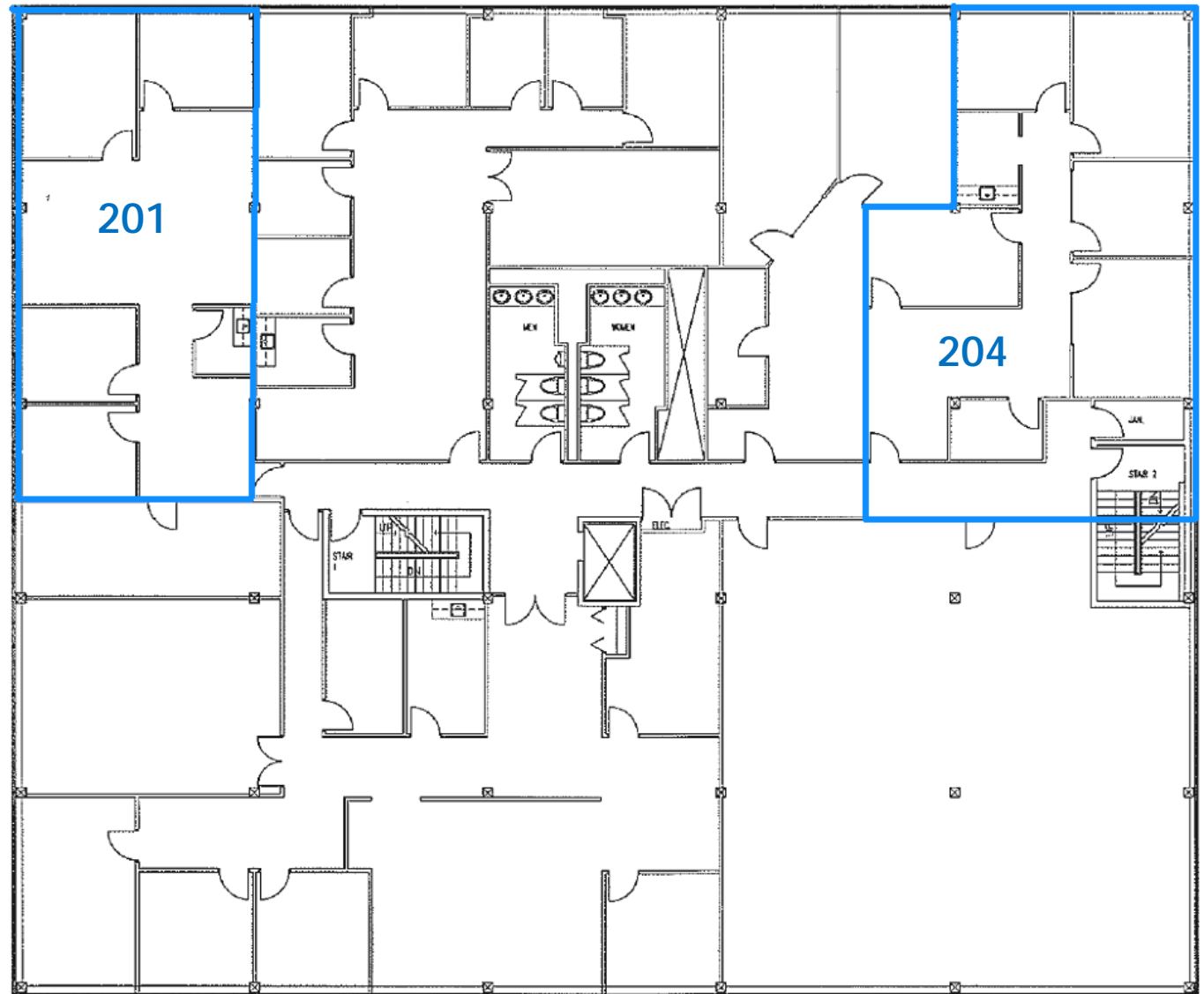
ONCOR INTERNATIONAL

1015 Matheson Boulevard East, Suite 11 | Mississauga, ON L4W 3A4 | T: 905.624-3500 F: 905.624.2636 | www.indusite.com

2nd Floor Plan

Suite 201
1,426 sq. ft.

Suite 204
1,687 sq. ft.



RETURN HOME

For more information,
please contact:

Gary Welch*
Senior Vice President
gwelch@indusite.com

Lawrence D'Orsay*
Executive Vice President
ldorsay@indusite.com

*Sales Representative; **Broker



ONCOR INTERNATIONAL

5170 Dixie Road

Mississauga, Ontario

For Lease

3rd Floor Plan

Suite 300
8,790 sq. ft.

RETURN HOME

For more information, please contact:

Gary Welch*
Senior Vice President
gwelch@indusite.com

Lawrence D'Orsay*
Executive Vice President
ldorsay@indusite.com

*Sales Representative; **Broker

